



oncore MOBILE

▶ BE RIGHT ON TRACK

The Oncore Mobile is a tracking device that is designed for personal tracking. It is a compact and portable device that requires no installation and can be carried in the pocket, briefcase, or backpack, etc. The idea of the device stemmed from current issues which affect public safety nowadays especially missing cases among children, etc.

Being a pioneer in vehicle tracking, we emphasize on three major components which are:

- ✓ Reliable and easy to use
- ✓ Find and Locate
- ✓ Distress signal

With the mobility of the device, user may remotely track the location of loved one or important assets at real time.

Backed by established infrastructure and vast experience from the Rightontrack Team, you can be sure of the most accurate information, anytime you need it by just a simple click of a mouse.

▶ THE ONCORE SOLUTION

- ✓ One stop center
- ✓ Pre and post implementation support
- ✓ Easy to use software
- ✓ Flexible and customizable
- ✓ State of the art mapping
- ✓ All round the clock Control Center
- ✓ Swift response time
- ✓ Dedicated and experienced team members

ONCORE FLOW

GPS Satellite



Position captured by GPS Satellite

GSM Tower



Wireless Network

Position in coordinate transmit into data via GSM Network

Holders of Oncore Mobile



Control Centre



Internet



Internet

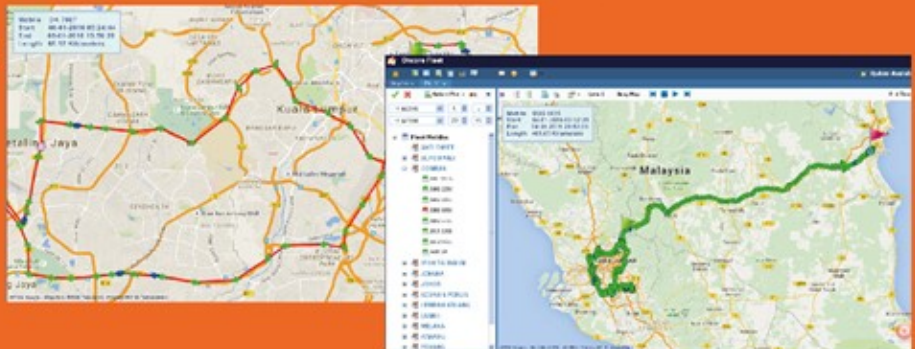
User



ONCORE SOFTWARE

Information is made available to users by utilizing the Oncore Mobile software. Upon subscription, users will be given a unique username and password to login the application.

- ✓ Real Time Information
- ✓ Historical Tracking
- ✓ Real Time Alerts
- ✓ Geofencing Capabilities
- ✓ Customizable



ONCORE HARDWARE

Our GPS module is a wireless information system designed for the changing needs of asset tracking and is the core of total system solution for end users as well as system developers.

- ✓ SOS Button
- ✓ Pre-defined Numbers for Calling
- ✓ Customizable Reporting Intervals
- ✓ Battery Operated with Low Battery LED Indicator
- ✓ Sleep Mode
- ✓ Fall back to GSM positioning in the absence of GPS

